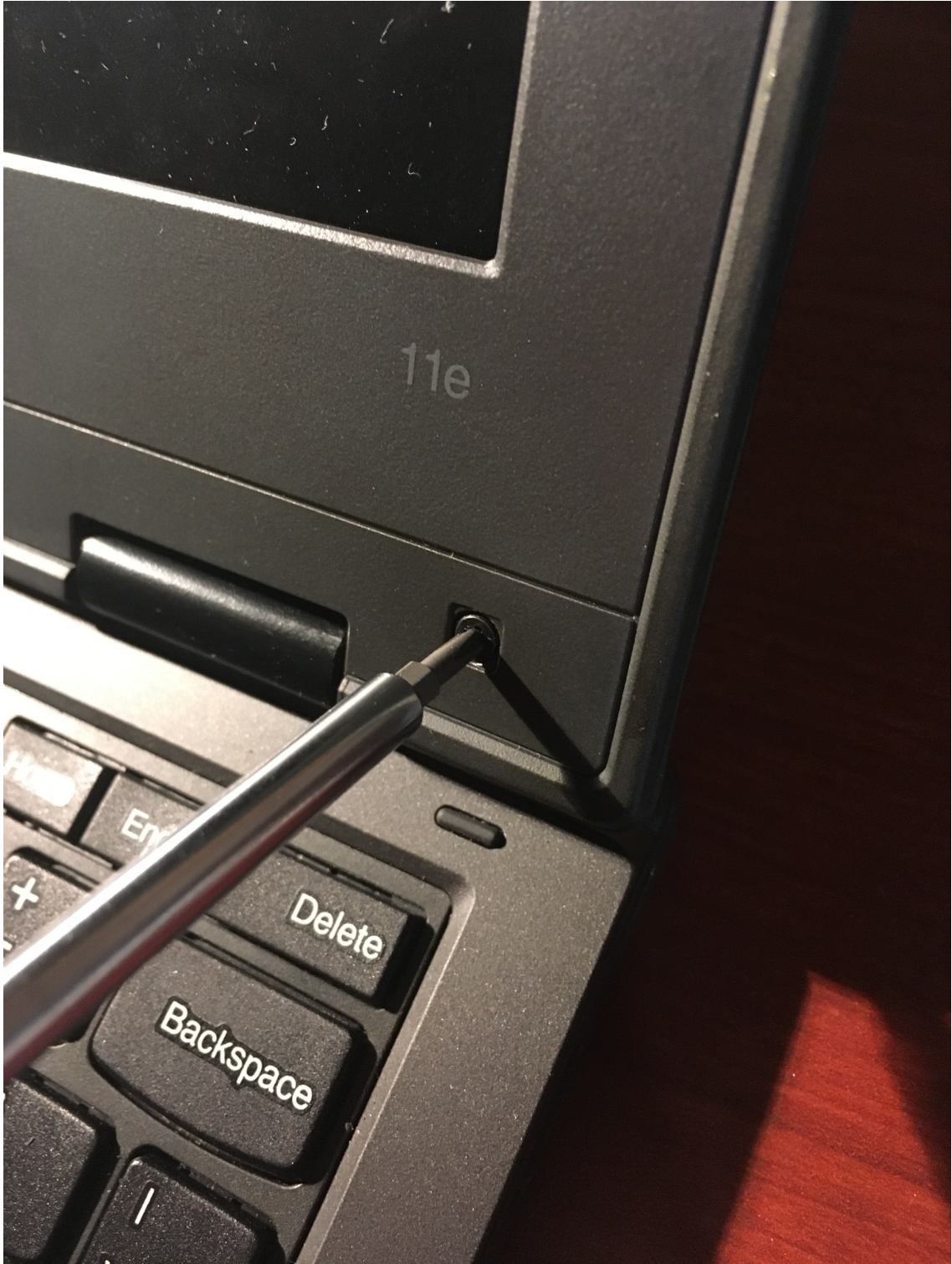
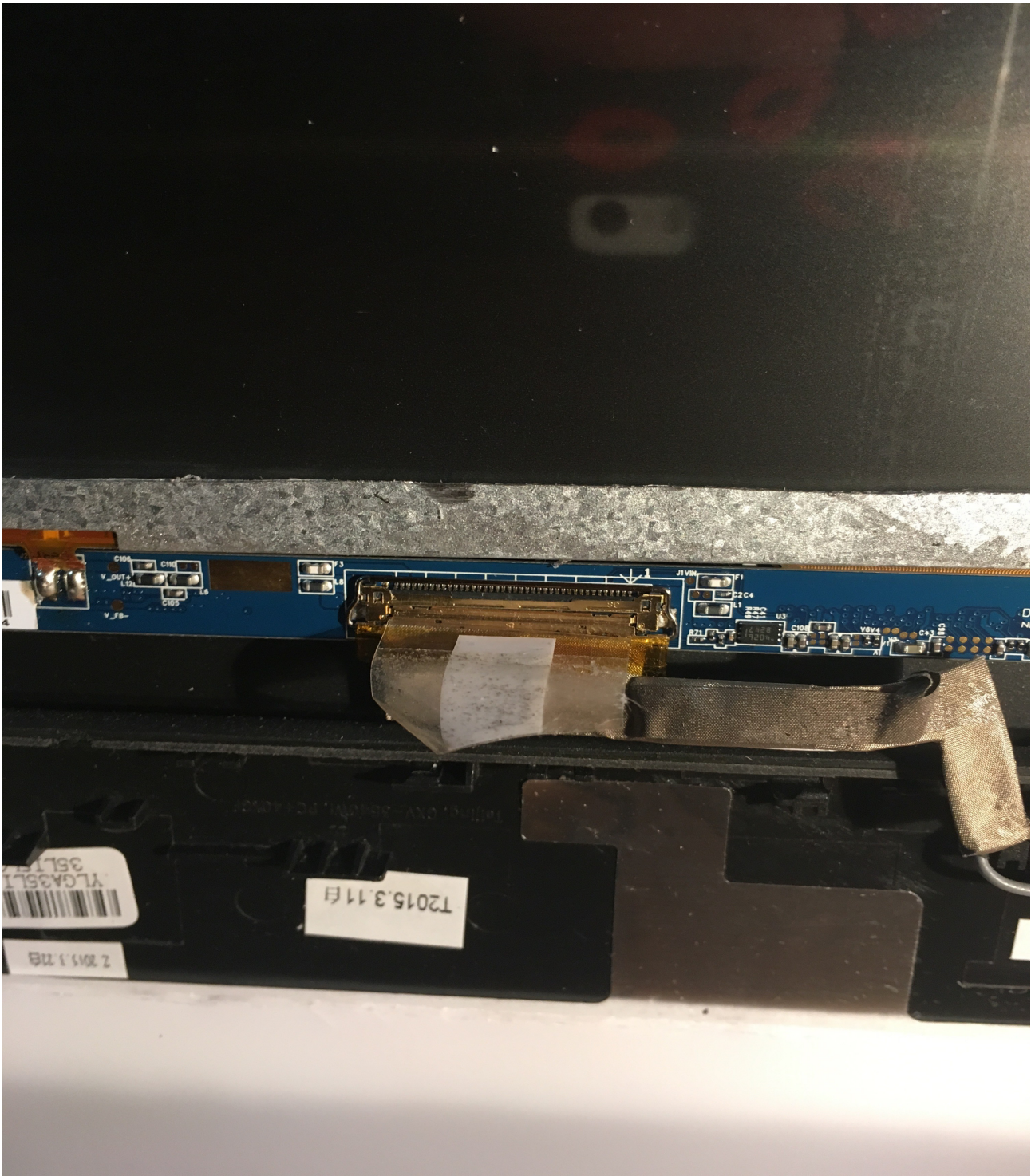




Start by carefully taking off the front bezel or cover of the laptop





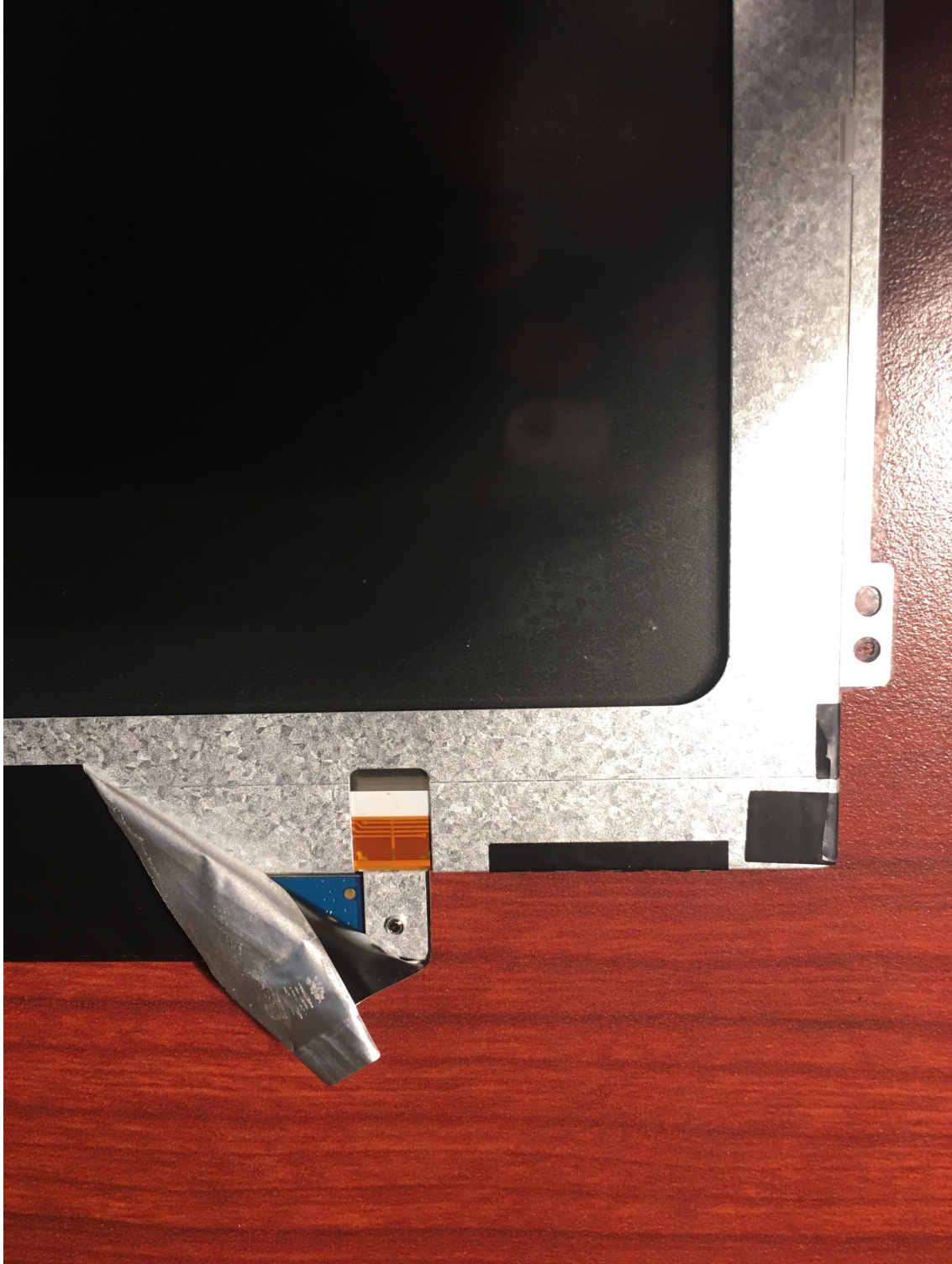
Find this display connector at the bottom and carefully disconnect it



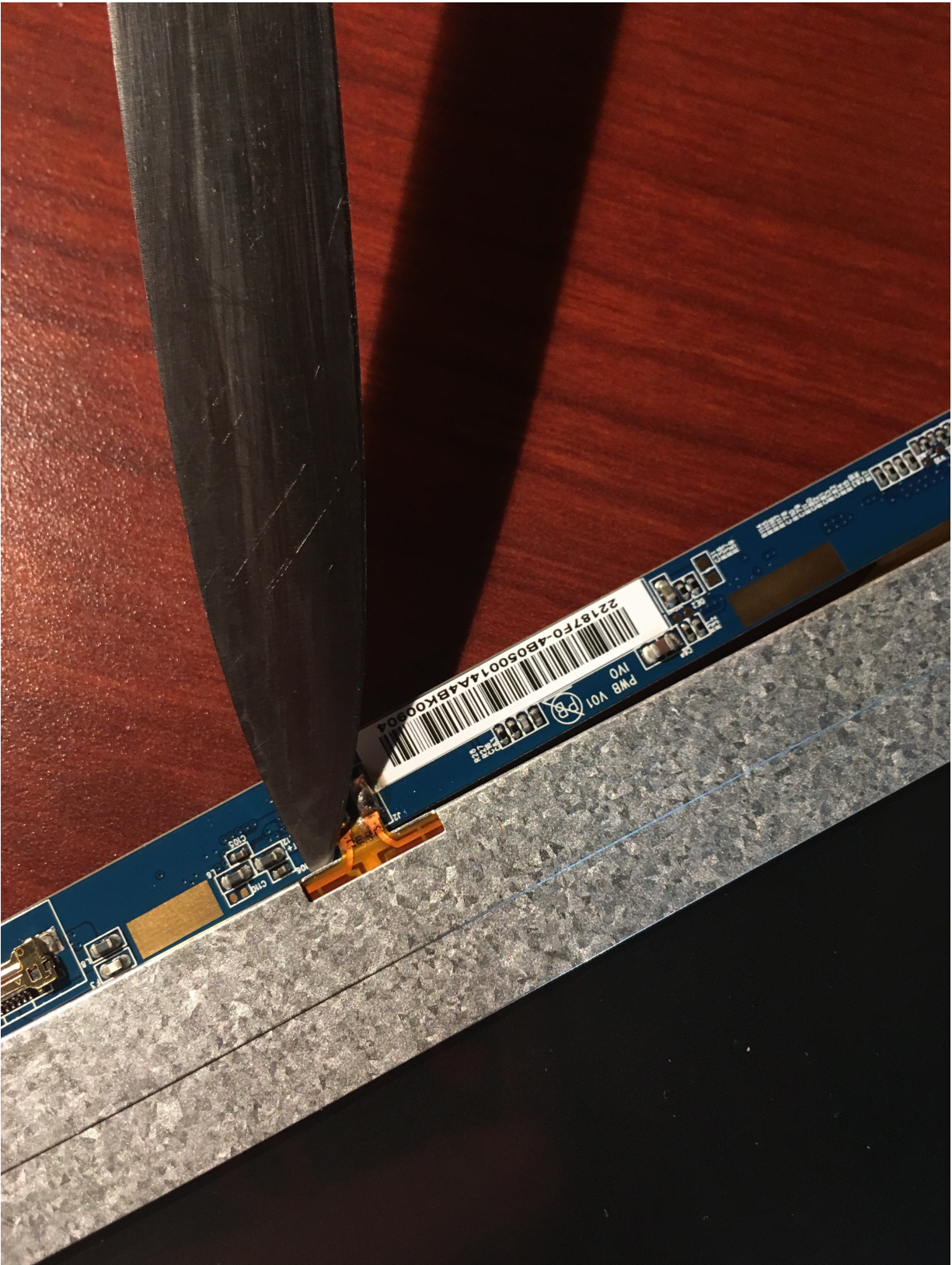
unscrew the sides holding the display to the case



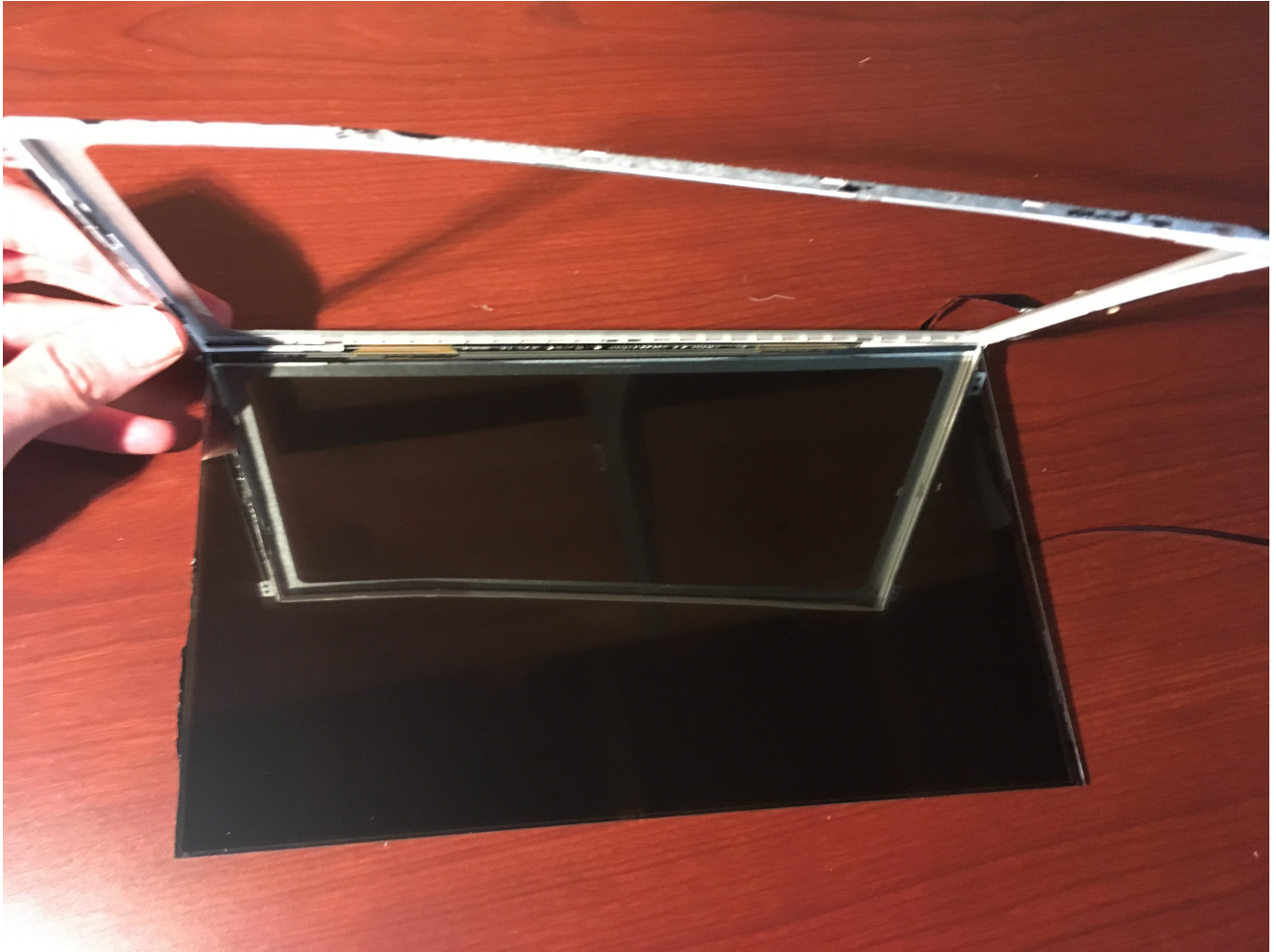
unscrew everything carefully until it can be safely disassembled from the laptop



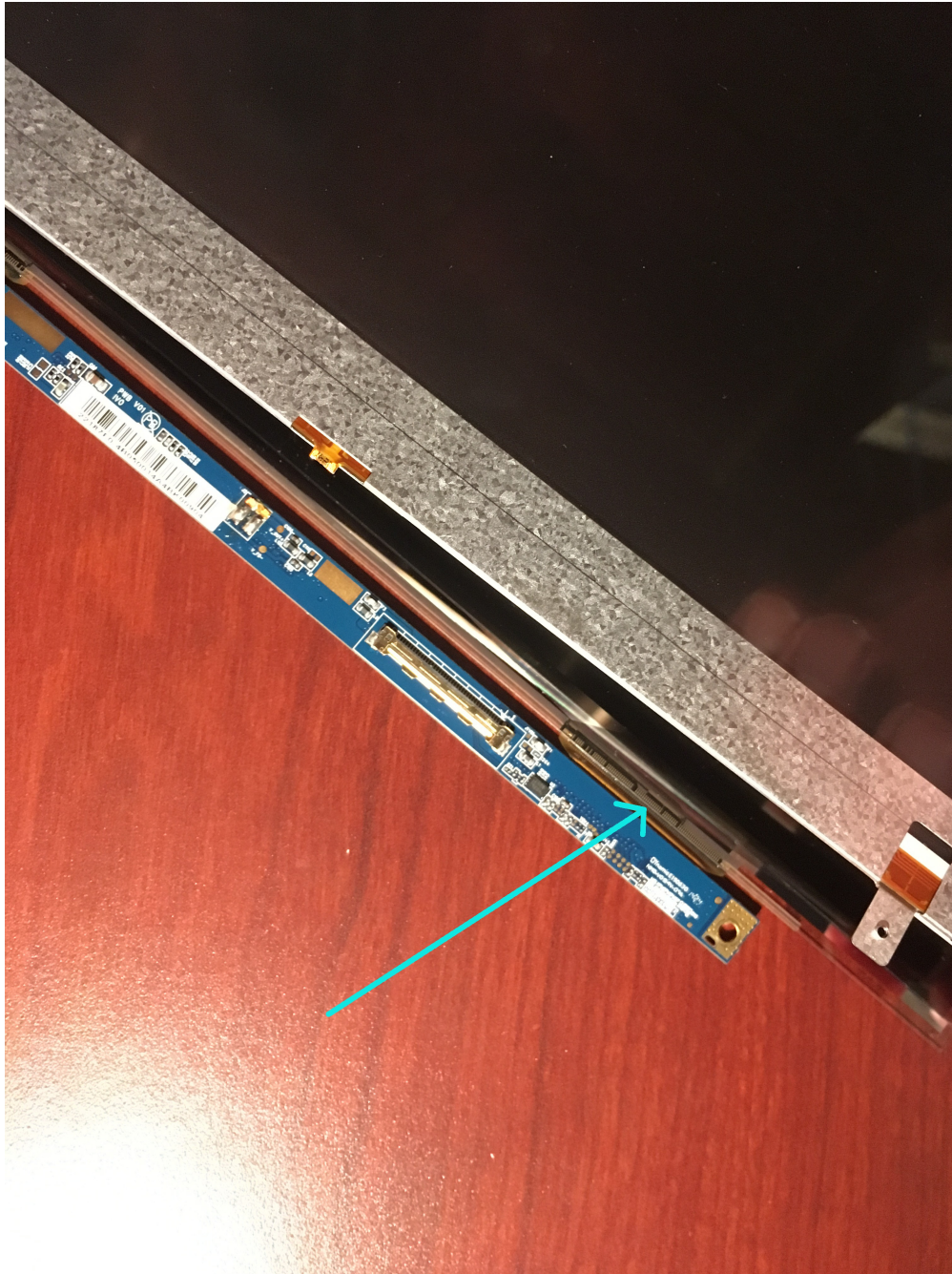
remove all the tape that surrounds the LCD module



*find the two wires that power the nasty LED
backlight and carefully cut it, this step is
recommended but optional*



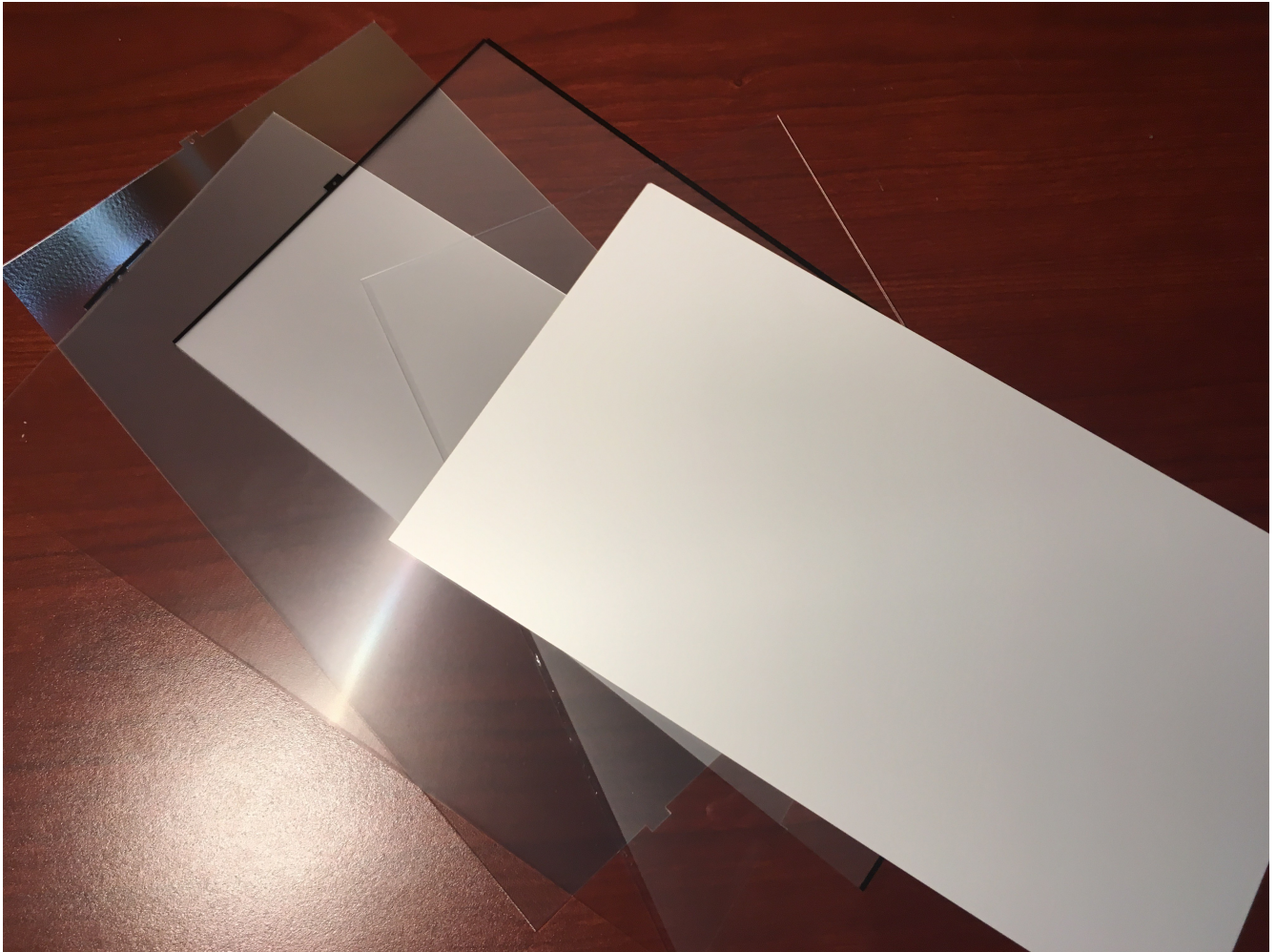
carefully remove the metal frame holding the LCD once all tape is removed, do to touch too much the ribbon cables in the sides, they are super delicate



Be super careful with these ribbon connectors, do not move them or touch them, these are super fragile and if they pull just a little bit you will end up with irreversible lines all over your screen, this is the single most fragile element, always look where your fingers are and be careful as if performing surgery



once you carefully take out the metal frame with extra attention to not crack the LCD display in the edges, you will find many optical sheets sandwiched in between



you can discard them except the hard transparent plastic one and the milky white ones, the ones that are prismatic are useless



With the transparent hard sheet you can either sand both sides with fine sand paper until you get a foggy translucent white finish, or you can cut another 1/8 thick milky white sheet bought from somewhere to the same size



if you can buy a 1/8 or 1/4 thick milky white plastic sheet this is much better, but the other method works as well



Now cut the back of the laptop screen plastic case to the inner size of the LCD display, this is exactly where the pixels start, if you don't have power tools you can do this patiently with a hand file





as you can see there is a slight inner frame remaining, this will serve to fix the translucent sheet securely



*place the milky white sheet to fit snugly
inside frame, sand the edges a bit if it doesn't
fit snugly*





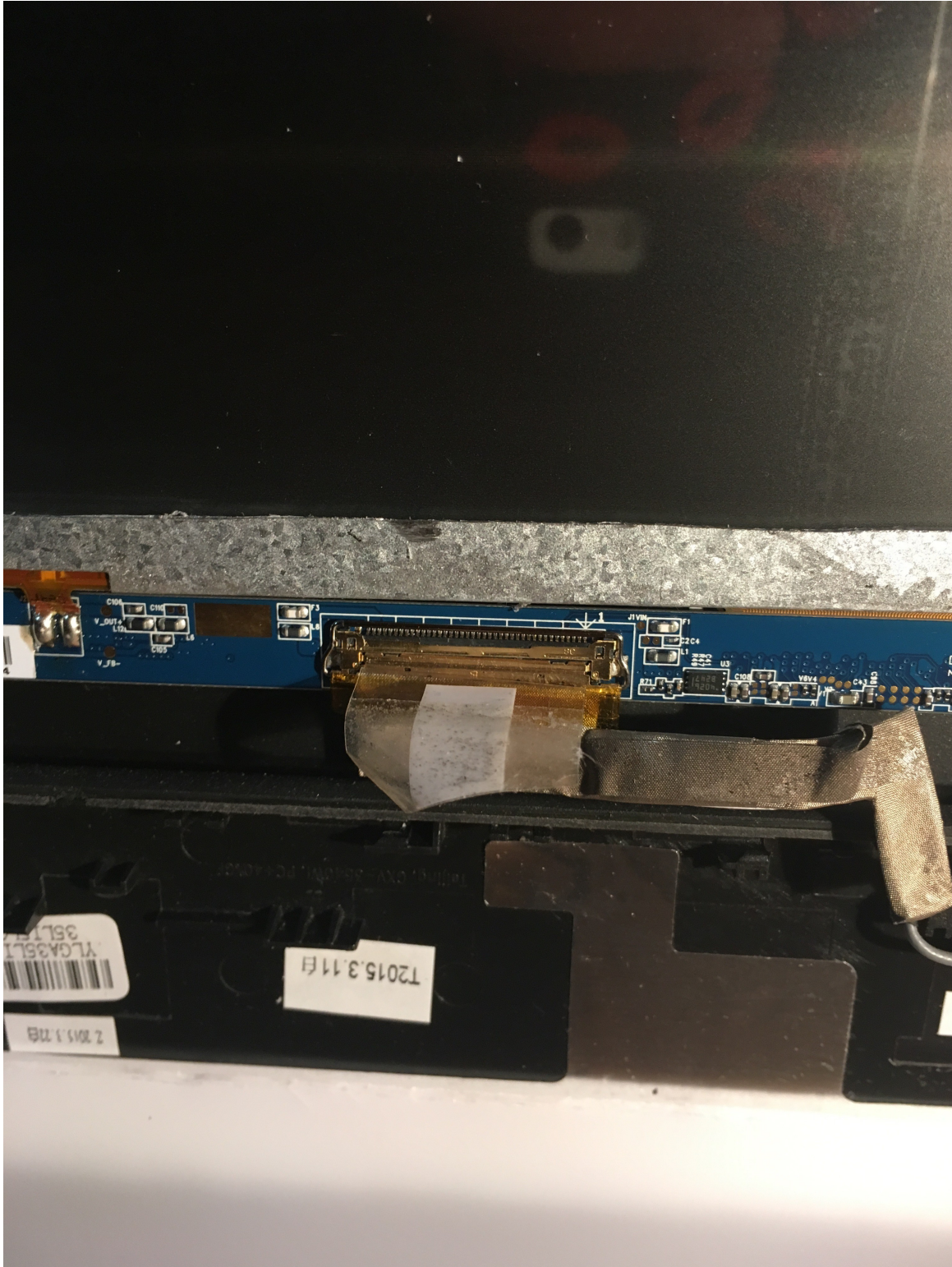
Clean really well with alcohol the lcd screen to get rid of any fingerprints and debris



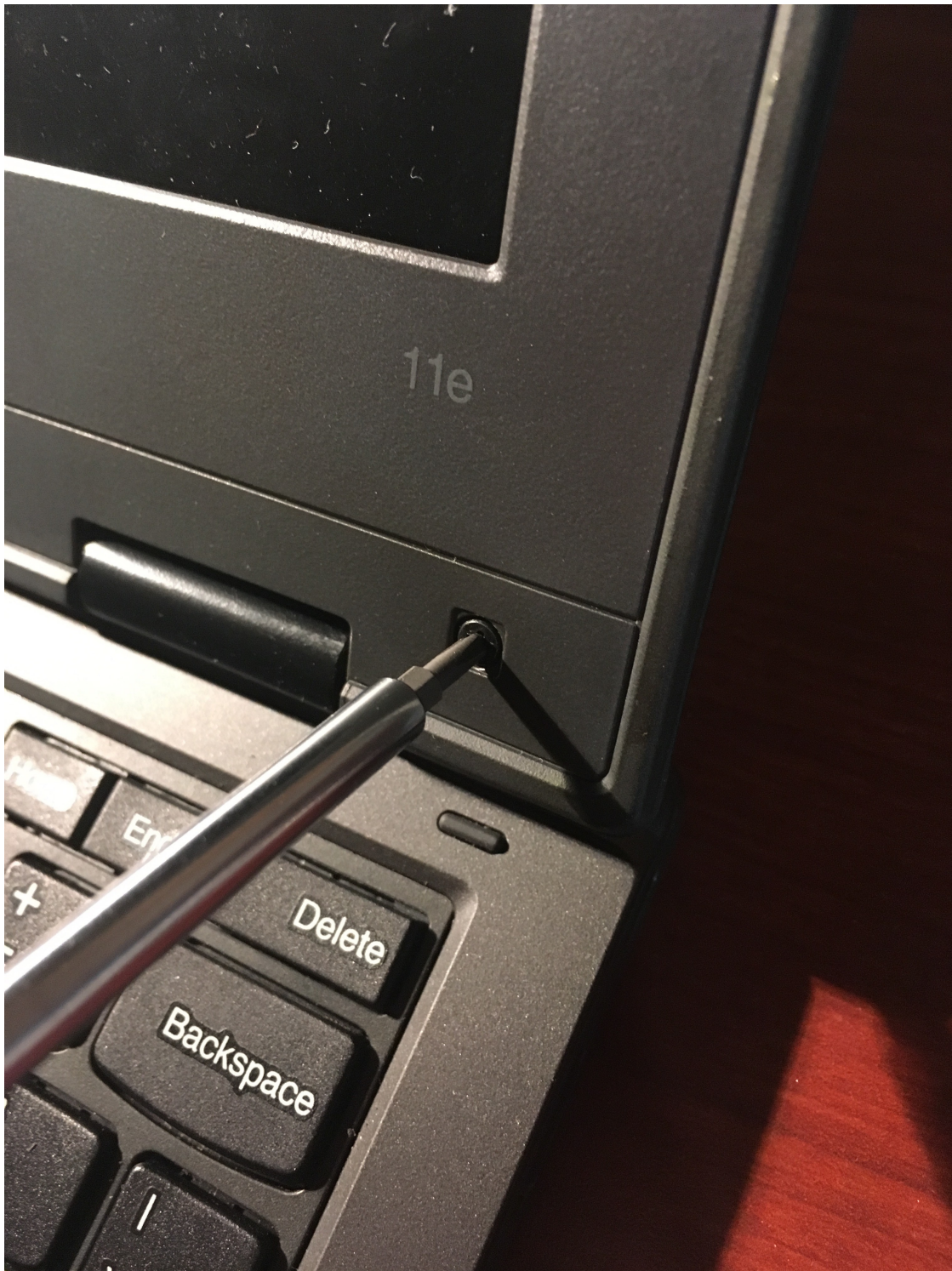
clean it well



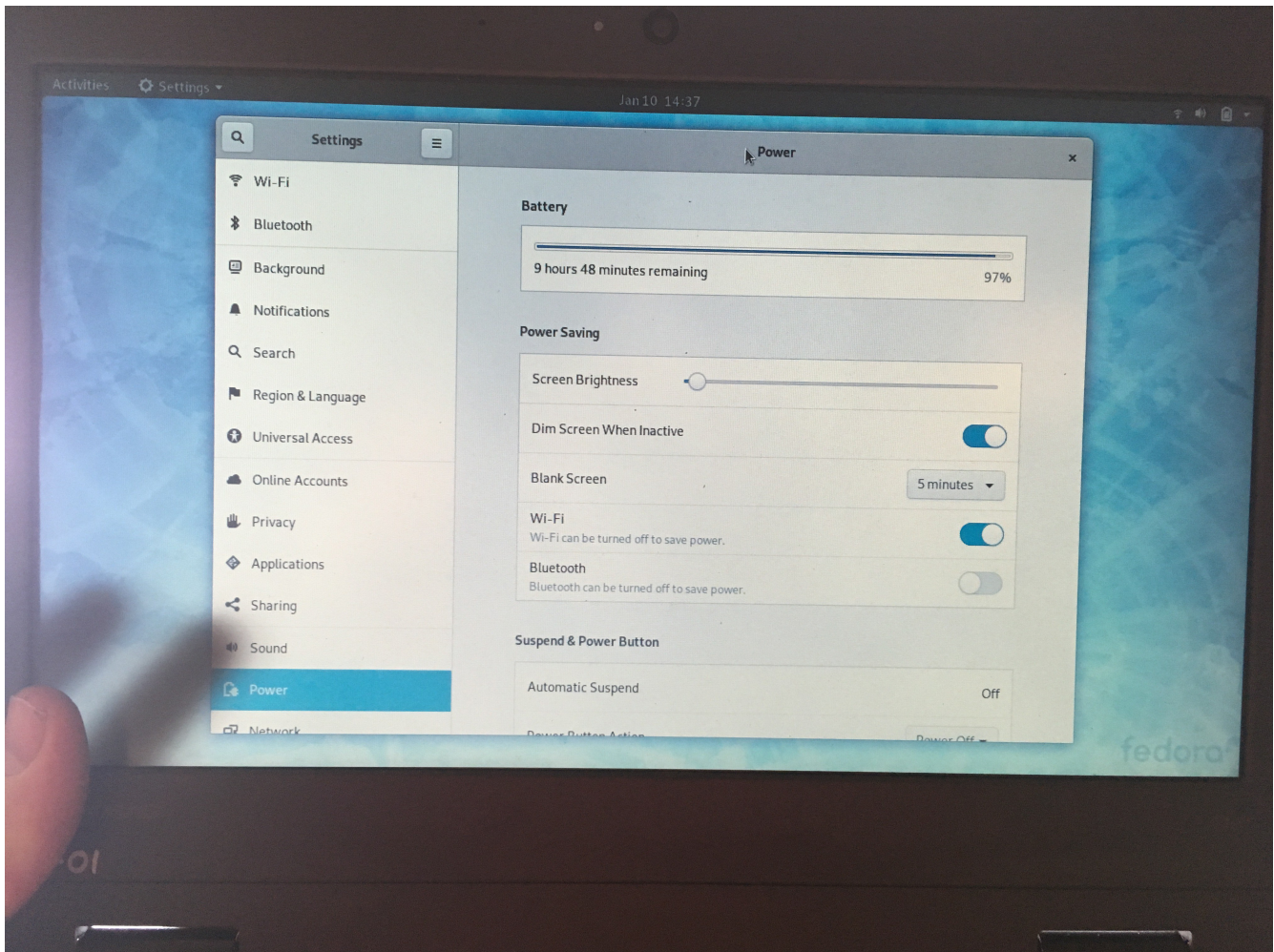
Place the LCD screen on top of the milky white sheet and one white sheet taken from the sandwich from the initial tear down



*connect and secure the LCD connector
back to the laptop*



Screw the front bezel back on



Congratulations, you now have a solar monitor that will let you experience the internet and the computer without harm to your mind and eyes, with the added benefit of quadruple battery life!